

Meet Our Faculty Mentors



Professor Zahrasadat Alavi is an assistant professor in the Electrical and Computer Engineering Department at Chico State. She has been the principal investigator on several grants such as National Science Foundation Major Research Instrumentation funding for the acquisition of an FTIR Spectroscopic Imaging System, Student Success Grant, and grants for Chico State Research, Scholarship, and Creative Activity. She is also a co-principal investigator on another NSF-MRI grant and an Office of Naval Research Grant. She is the director of Alavi FTIR Spectroscopic Imaging Lab (AFISIL) and supervises multiple undergraduate students in their research. Her research interests include characterization of biological samples by employing FTIR Spectroscopic Imaging techniques and developing novel digital image processing and analysis algorithms to process the collected FTIR-spectro-microscopic data.



Professor Eric Bartelink is a professor of physical anthropology and serves as the director of the Chico State Human Identification Laboratory (CSUC-HIL), the Stable Isotope Preparation Laboratory (SIPL), and as the co-coordinator of the Certificate in Forensic Identification. He teaches undergraduate and graduate-level coursework in introductory physical anthropology, human osteology, forensic anthropology, bioarchaeology, human growth and development, and statistics. He is a certified instructor for POST (Peace Officer Standards and Training), and teaches short courses and workshops in forensic anthropology, forensic archaeology, and human versus nonhuman bone identification. His interests in forensic anthropology relate to the use of stable isotope analysis for the identification of unknown individuals, taphonomy (e.g., cremains, animal scavenging, and fluvial transport), and trauma analysis.



Professor Shawn Bates is an associate professor of psychology and neuroscience at Chico State. His interests include higher learning and research that could potentially benefit individuals suffering from addiction, behavioral neuroscience, adolescence, social environment, stress, and psychopharmacology. Currently, he is using in vivo electrophysiology to examine how stress affects cognition in males and females. His long-term research goals involve exploring long-lasting effects of psychoactive drugs in adolescence, including recreational substances like opioids and psychostimulants, but also those with more clinical relevance, such as ketamine and ADHD drugs like methylphenidate.



Professor Kristopher "Kris" Blee is a professor of biological sciences at Chico State where he teaches undergraduate coursework in biology. His field of study is plant cell biology. His research interests are aimed at plant defense, plant-microbe interactions, symplastic continuity, and cell wall development.



Professor Gerald Manuel Cobián is an assistant professor of biological sciences at Chico State. He is a microbial ecologist interested in plant-fungal interactions. His research interests include plant fungal interactions, biogeography, phylogenetics, and community assembly. His past research has mainly focused on foliar fungal endophytes (fungi that live inside the leaves of plants) and the biogeography of their interactions in an attempt to describe how changing environments influence plant-fungal interactions and explain the assembly processes of fungal communities.



Professor Kasey DeAtley is an associate professor of agriculture at Chico State. DeAtley also co-advises the Young Cattlemen’s Association. Her field of study is animal and range science. Her research and professional interests include beef cattle production, rangeland science and management, reproductive physiology, ruminant nutrition, supplementation of byproducts, genetics, and genomics. She has researched livestock mortality composting, the utility of supplementing brewers grains to cattle, and increasing the capacity of rangeland research and education in collaboration with multiple institutions.



Professor Andrés García-Penagos is an assistant professor of psychology at Chico State. His field of study is experimental psychology and experimental analysis of human behavior. His research interests include the experimental analysis of human behavior, including particularly the issues of behavioral rigidity and behavioral flexibility, decision-making, choice, and symbolic behavior, particularly in social situations, both in the lab and in naturalistic settings. He also has an interest in social cognition and social coordination and action. He is also fond of conceptual/philosophical work. He has supervised research into the influence of temporal perspective and acculturation as predictors of eating behaviors, exercising, and bodily image among LatinX undergraduate students.



Professor Claudia Sofia Garriga-López is an assistant professor of intersectional Chicana/Latina studies as well as queer and trans Latinx studies in the Multicultural and Gender Studies Department at Chico State. She has a PhD in American studies from the Department of Social and Cultural Analysis of New York University. She is currently serving as a postdoctoral associate in the Extreme Events Institute in the Office of Research and Economic Development at Florida International University, where she is part of a research and instructional team for the “Race, Risk, and Resilience: Building a Local-to-Global Commons for Justice” program funded through the Andrew W. Mellon Foundation. Her scholarly work is grounded in a critical engagement with activism, public policy, and public health, as well as trans, feminist, and queer performance art and cultural production in Latin America, the Caribbean, and within people of color communities in the United States.



Professor Kati Geszvain is an assistant professor of biological sciences at Chico State. Her field of study focuses on bacterial genetics, bacterial physiology, and environmental microbiology. Her work focuses on bacteria that convert reduced, soluble manganese to insoluble Mn minerals. This microbial activity affects the global geochemical cycling of carbon and metals and can be used for bioremediation applications. She uses genetic tools to understand how and why bacteria oxidize manganese. Her research interests include bacterial physiology and metal transformations by environmental bacteria.



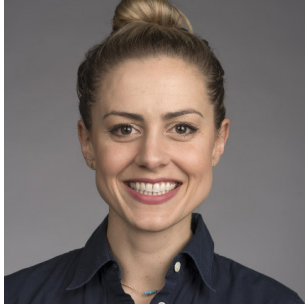
Professor Keiko Goto is originally from Japan. She was born in Gunma Prefecture, which is famous for hot springs and tough women. She holds a bachelor's degree in food science and technology from Kyoto University and a PhD in nutritional sciences from Cornell University. As a nutritionist, Goto has worked in various countries such as Guatemala, Indonesia, Jamaica, the Philippines, and Tanzania, and has developed a deep appreciation of diversity in people and food. Her current research interests include food and culture, international nutrition, and food behaviors.



Professor Patrick S. Johnson is an associate professor in the Psychology Department at Chico State. Prior to arriving in Chico in 2015, he earned a bachelor's degree in psychology from the University of Florida, an master's degree in applied behavioral science from the University of Kansas, and a PhD in psychology from Utah State University. He served as a postdoctoral fellow in the Department of Psychiatry at the Johns Hopkins University School of Medicine. Johnson's training and research has focused on the areas of behavioral economics, behavior analysis, psychopharmacology, and addiction. He works closely with his undergraduate and graduate research assistants to apply behavioral economic models to a variety of public health issues, including substance abuse, sexual risk behavior, and distracted driving.



Professor David Keller is a professor in the Biological Sciences Department at Chico State. His field of study is genetics and his past research includes the genetics of type 2 diabetes, specifically pancreatic beta cell biology and the molecular and cellular mechanisms of type 2 diabetes. His lab studies gene expression and signal transduction pathways in pancreatic beta cells. In particular, they are interested in mechanisms of tissue-specific gene expression and currently study the regulation of microRNA genes.



Professor Jennifer A. Malkowski is an associate professor of communication arts and sciences at Chico State. Her research and teaching lie at the intersections of public health communication, medical professionalism, and biotechnological controversy where she explores how persuasive communication influences perceptions of and responses to health risks at both the individual and collective levels. Her work has appeared in *Health Communication*, *Journal of Medical Humanities*, *The Review of Communication*, and *Journal of International & Intercultural Communication*, in addition to other edited collections. Her recent work includes a co-edited special issue of *Rhetoric of Health & Medicine* that inaugurates a research trajectory for scholars invested in the public nature of health specifically.



Professor Kenyan L. Martin is a clinic director and assistant professor of communication arts and sciences at Chico State. Her field of study is speech-language pathology and her past research includes communication enhancement approaches for patients with traumatic brain injury and stroke as well as teaching and learning methods in communication sciences and disorders. Her current interests include single subject experimental design, adult language and cognitive communication disorders, clinical supervision, and interprofessional practice.



Professor Gabby Medina Falzone a.k.a. Dr. Gee is a queer, multi-ethnic boricua, and an assistant professor of African American studies and Latinx studies. She is an interdisciplinary critical youth studies scholar, drawing from fields such as social epidemiology, critical psychology, and critical criminology. Her work is greatly influenced by Fanonian sociogeny and both Patterson and Cacho's theories of social death. Her past research examined the criminalization, dehumanization, and disregard of Black and Latinx adolescents in schools, communities, and juvenile detention and the social and psychological consequences of that treatment.



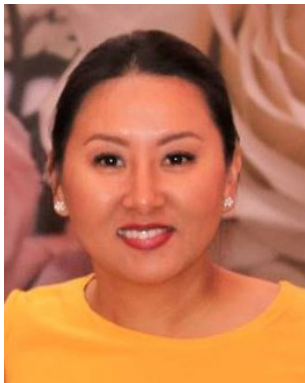
Professor Rachel Teasdale teaches for the honors program as well as the Earth Environmental Sciences Department at Chico State. Her field of study is earth sciences, specifically volcanology and geoscience education Research. Her research in volcanology involves investigating how lava flows cool and crystallize as they flow across the Earth's surface. Teasdale's research also includes projects in Northern California, including in the Lassen region and in learning about ancient Mt. Yana. Her geoscience education research focuses on ways students learn best in the sciences, including active learning and inquiry-based lab activities.



Professor Robert Tinkler is a professor and department chair of the History Department at Chico State. He has been with Chico State for 21 years. His field of study is 19th-century US history. His research specializes in the history of the early American Republic, the American Civil War and Reconstruction era, and the American South. His past research has focused on antebellum and American Civil War-era politics.



Professor Martin van den Berg is an associate professor and department chair of the Psychology Department at Chico State. He is interested in cognitive psychology, the scientific study of mental processes. Most of his research has been on visual perception, specifically the processes by which the visual system takes in sensory information and organizes it into whole objects that can be recognized. He also has an interest in attention and working memory. By doing research in cognitive psychology, he has come to appreciate the ability to answer various questions by developing an appropriate methodology. He has recently worked with students on various topics, exploring the benefits of different research methods.



Professor Judy Vang was raised in Oroville and received her bachelor's and master's degrees from Chico State's School of Social Work, and her doctoral degree from Portland State University Graduate School of Social Work. Vang's research interests include mental health, juvenile delinquency, refugee/immigrants, HIV/AIDS, and the educational experiences of students of color. Her past research has included suicide among Hmong Youth, Hmong parents' understanding of the juvenile justice system, HIV, social work education.



Professor Alisa Wade is an assistant professor of history at Chico State and a historian of early America, with a focus on the intersections of the history of gender and capitalism in the eighteenth century. Her research focuses on the intersections of gender history and capitalism in the eighteenth century. Previous projects have analyzed the economic experiences of widows, patterns of women's investing, and the gendered implications of class consolidation in the revolutionary era and early republic.